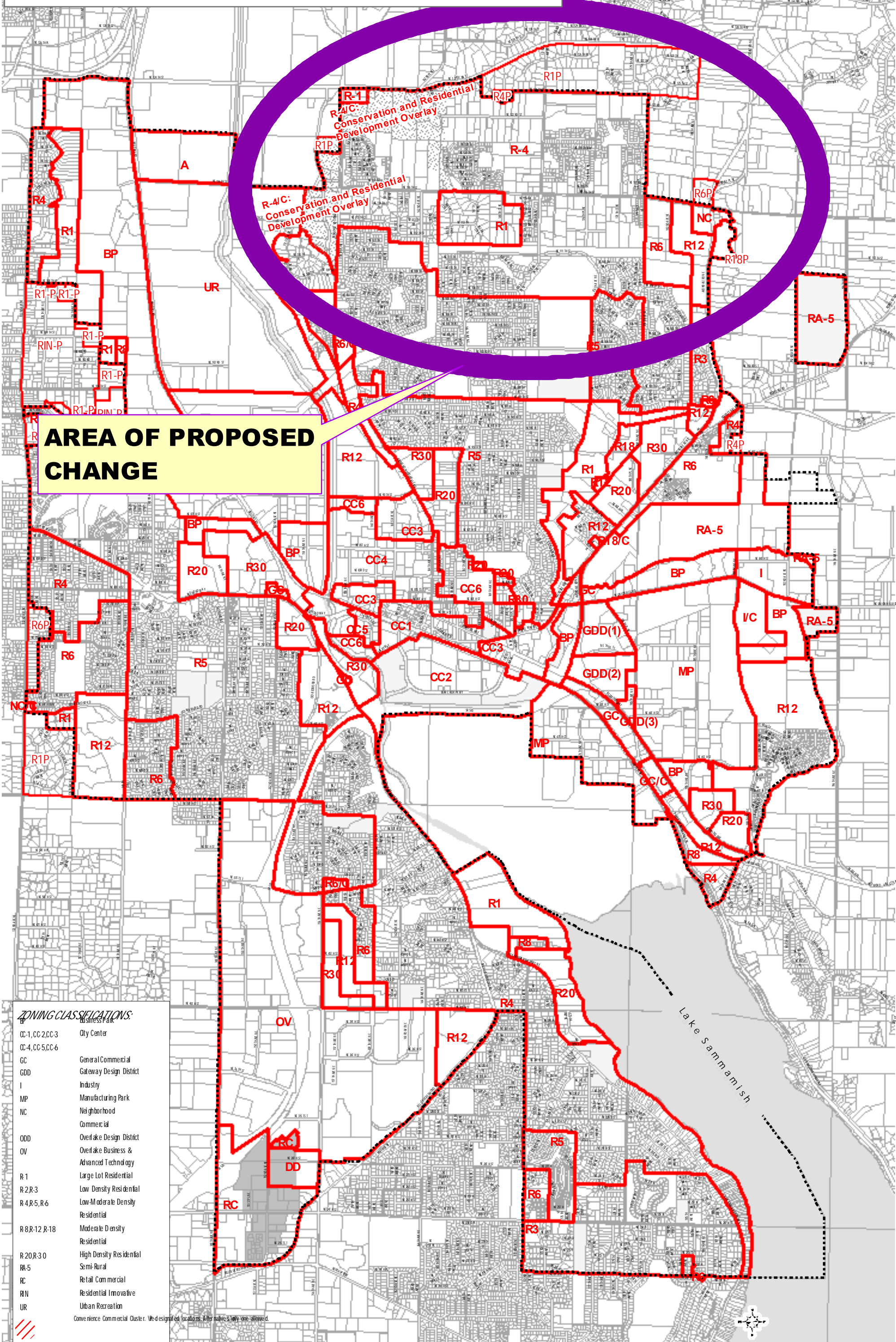


Attachment B Exhibit 2: Redmond Zoning Map



AREA OF PROPOSED CHANGE

ZONING CLASSIFICATIONS:

CC-1, CC-2, CC-3	City Center
CC-4, CC-5, CC-6	General Commercial
GC	Gateway Design District
GDD	Industry
I	Manufacturing Park
MP	Neighborhood Commercial
NC	Overlake Design District
ODD	Overlake Business & Advanced Technology
OV	Large Lot Residential
R-1	Low Density Residential
R-2, R-3	Low-Moderate Density Residential
R-4, R-5, R-6	Moderate Density Residential
R-8, R-12, R-18	High Density Residential
R-20, R-30	Semi-Rural
RA-5	Retail Commercial
RC	Residential Innovative
RIN	Urban Recreation
UR	

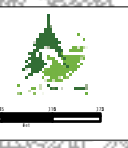
Convenience Commercial Cluster: We designated locations. Alternative only one allowed.

- Notes:**
- Redmond Watershed is zone of RA-5.
 - Suffix of "C" indicates property specific zoning regulations.
 - Suffix of "P" on zoning label indicates pre-am relaxation zoning.

LEGEND:

	Redmond City Limits		Home Redevelopment Overlay
	Zoning Lines		City Parks

CITY OF REDMOND
ZONING MAP
 Published November 2006



This is a general representation. City does not warrant precise boundaries. For Official Zoning Map, see Section 20C.1015-010 of the Redmond Community Development Guide. A paper copy of the official zoning map is available for review at the City of Redmond Permit Center.
<http://www.cityofredmond.gov> for updated versions.